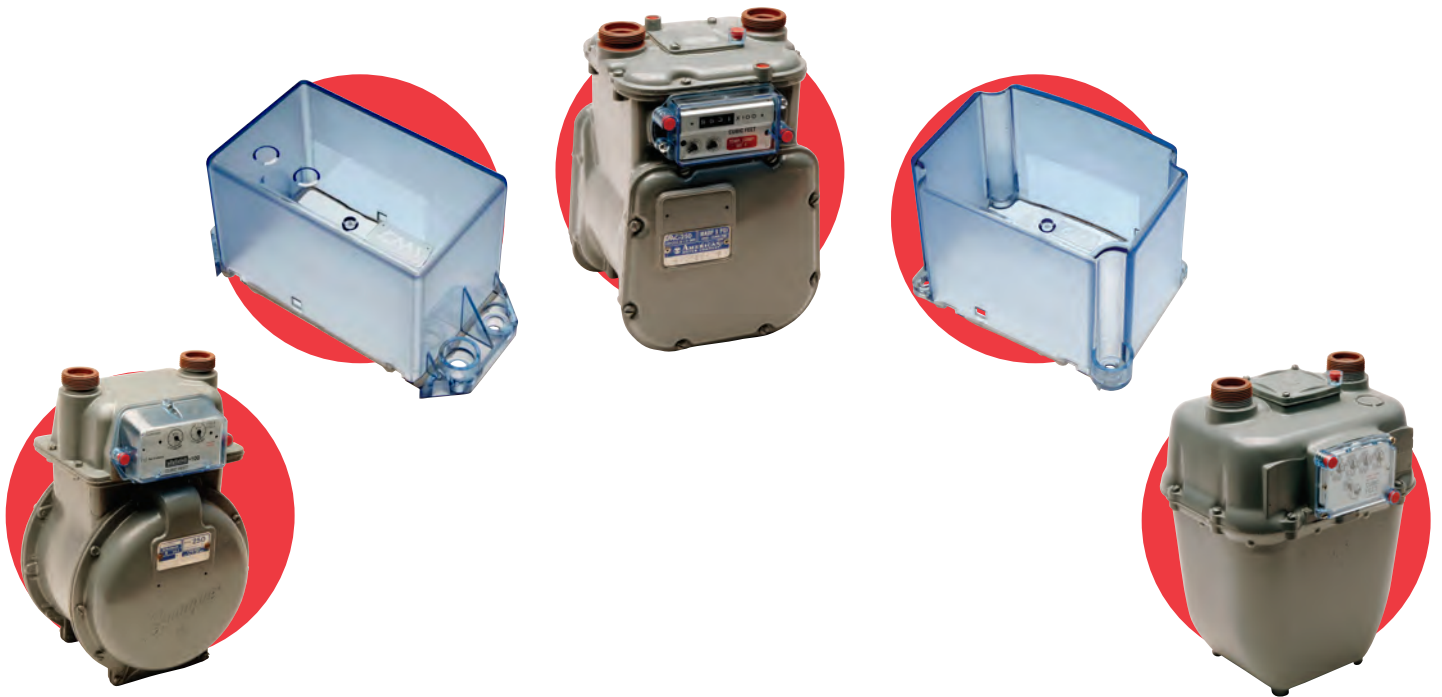


# *Supplying the Natural Gas Industry with Quality Products and Services Since 1975*



CAROLINA MOLDINGS, INC.

Since 1975 Carolina Moldings, Inc. has been producing the highest quality index covers, tamper seals, and repair parts for virtually every gas meter currently in service.

Carolina Moldings broke new ground by establishing the "red plug" tamper seal as the standard for all index covers throughout the industry. Today, we maintain the same spirit of progress and forward thinking that has marked our company from the beginning



# TABLE OF CONTENTS

---

American/Honeywell Index Covers.....	Page 3
Rockwell/Sensus Index Covers.....	Page 4
Sprague/Itron Index Covers .....	Page 5
Itron Endpoint Index Covers.....	Page 5
Residential Tamper Systems.....	Page 6
Commercial Tamper System Diagram.....	Page 7
Commercial American Meter Tamper System.....	Page 8
Commercial Meter Tamper System.....	Page 9
Paint Covers.....	Page 10
Meter Screws.....	Page 11
Miscellaneous Parts & Meter Gaskets .....	Page 12



CAROLINA MOLDINGS, INC.

# AMERICAN/HONEYWELL INDEX COVERS



**A-101**  
Fits American AL 175 AL425 Meters; Circle or Direct Read  
• Will accept 2 Snap Seal #1 tamper plugs (not included)

105/Case

**A-101-1**  
Consists of A-101 with SureSeal preapplied silicone gasket

105/Case

**A-101-12**  
Consists of A-101-1 with 2 Snap Seal tamper plugs

105/Case

**A-101-2**  
Consists of A-101 with 2 Snap Seal tamper plugs

105/Case



**A-101-OS**  
Fits American AL 175 AL425 Meters; Circle or Direct Read  
• Will not accept Snap Seal tamper plugs

105/Case

**A-101-OS-1**  
Consists of A101OS with SureSeal preapplied silicone gasket

105/Case



**A-100G**  
Fits ITRON 100G Endpoints for American Meters.  
• Will accept 2 Tophat tamper plugs (not included)  
Does not use SureSeal preapplied gasket

52/Case

**A-100G-2**  
Consists of A-100G with 2 Tophat tamper plugs

52/Case



**A-103**  
Fits American 35B – 500B and AL800 – AL5000 Meters  
• Will accept 2 Snap Seal #1 tamper plugs (not included)

54/Case

**A-103-1**  
Consists of A-103 with SureSeal preapplied silicone gasket

54/Case

**A-103-12**  
Consists of A-103-1 with 2 Snap Seal tamper plugs

54/Case

**A-103-2**  
Consists of A-103 with 2 Snap Seal tamper plugs  
\* PLEASE SEE COMMERCIAL TAMPER SYSTEMS PAGE  
FOR A-103 TAMPER KITS

54/Case



**A-103-OS**  
Fits American 35B – 500B and AL800 AL5000 Meters  
• Will not accept Snap Seal tamper plugs

54/Case

**A-103-OS-1**  
Consists of A103OS with SureSeal preapplied silicone gasket

54/Case



**A-40G**  
Fits ITRON 40G ERT for American Meter  
• Will accept 2 Tophat tamper plugs (not included)

68/Case

**A-40G-1**  
Consists of A-40G with SureSeal preapplied silicone gasket

68/Case

**A-40G-12**  
Consists of A-40G-1 with 2 Tophat tamper plugs

68/Case

**A-40G-2**  
Consists of A-40G with 2 Tophat tamper plugs

68/Case



CAROLINA MOLDINGS, INC.

# ROCKWELL/SENSUS INDEX COVERS



<b>R-103</b> Fits Rockwell 150 415 Short Screw Meters • Will accept 2 Snap Seal #1 tamper plugs (not included)	220/Case
--	----------

<b>R-103-1</b> Consists of R103 with SureSeal preapplied silicone gasket	200/Case
---	----------

<b>R-103-12</b> Consists of R1031 with 2 Snap Seal tamper plugs	200/Case
--	----------

<b>R-103-2</b> Consists of R103 with 2 Snap Seal tamper plugs	220/Case
--	----------



<b>R-104</b> Fits Rockwell 150-415 Long Screw Meters	260/Case
---	----------

<b>R-104-1</b> Consists of R-104 with SureSeal preapplied silicone gasket	260/Case
--	----------



<b>R-100G</b> Fits ITRON 100G Endpoints for Rockwell Meters. • Will accept 2 Tophat tamper plugs (not included) Does not use SureSeal preapplied gasket	60/Case
--	---------

<b>R-100G-2</b> Consists of R-100G with 2 Tophat tamper plugs	60/Case
--	---------



<b>R-105</b> Fits Rockwell R750-R5000 Meters • Will accept 2 Snap Seal #2 tamper plugs (not included)	45/Case
---	---------

<b>R-105-2</b> Consists of R-105 with 2 Snap Seal #2 * PLEASE SEE COMMERCIAL TAMPER SYSTEMS PAGE FOR R-105 TAMPER KITS *	45/Case
---	---------



<b>R-40G</b> Fits ITRON 40G ERT for Rockwell Meter • Will accept 2 Tophat tamper plugs (not included)	80/Case
---	---------

<b>R-40G-1</b> Consists of R-40G with SureSeal preapplied silicone gasket	80/Case
--	---------

<b>R-40G-12</b> Consists of R-40G-1 with 2 Tophat tamper plugs	80/Case
---	---------

<b>R40G2</b> Consists of R-40G with 2 Tophat tamper plugs	80/Case
--	---------



CAROLINA MOLDINGS, INC.

## SPRAGUE / ITRON INDEX COVERS



<b>S-105</b> Fits Sprague 175-400 Meters; Slant Face Meters • Will accept 2 Snap Seal #1 tamper plugs (not included)	105/Case
<b>S-105-1</b> Consists of S-105 with SureSeal preapplied silicone gasket	105/Case
<b>S-105-12</b> Consists of S-105-1 with 2 Snap Seal tamper plugs	105/Case
<b>S-105-2</b> Consists of S-105 with 2 Snap Seal tamper plugs	105/Case



<b>I-100G</b> Fits ITRON 100G Endpoints for Itron Meters. • Will accept 2 Tophat tamper plugs (not included)	60/Case
<b>I-100G-2</b> Consists of R-100G with 2 Tophat tamper plugs	60/Case

## ITRON ENDPOINT INDEX COVERS



<b>A-100G</b> Fits ITRON 100G Endpoints for American Meters. • Will accept 2 Tophat tamper plugs (not included) Does not use SureSeal preapplied gasket	52/Case
<b>A-100G-2</b> Consists of A-100G with 2 Tophat tamper plugs	52/Case



<b>A-40G</b> Fits ITRON 40G ERT for American Meter • Will accept 2 Tophat tamper plugs (not included)	68/Case
<b>A-40G-1</b> Consists of A-40G with SureSeal preapplied silicone gasket	68/Case
<b>A-40G-12</b> Consists of A-40G-1 with 2 Tophat tamper plugs	68/Case
<b>A-40G-2</b> Consists of A-40G with 2 Tophat tamper plugs	68/Case



<b>R-40G</b> Fits ITRON 40G ERT for Rockwell Meter • Will accept 2 Tophat tamper plugs (not included)	80/Case
<b>R-40G-1</b> Consists of R-40G with SureSeal preapplied silicone gasket	80/Case
<b>R-40G-12</b> Consists of R-40G-1 with 2 Tophat tamper plugs	80/Case
<b>R40G2</b> Consists of R-40G with 2 Tophat tamper plugs	80/Case



<b>R-100G</b> Fits ITRON 100G Endpoints for Rockwell Meters. • Will accept 2 Tophat tamper plugs (not included) Does not use SureSeal preapplied gasket	60/Case
<b>R-100G-2</b> Consists of R-100G with 2 Tophat tamper plugs	60/Case





CAROLINA MOLDINGS, INC.

# RESIDENTIAL TAMPER SYSTEMS

\* All Listed Screws Are Available \*



## SS #1

Snap Seal #1 fits Index Covers A-101, A-103, W-175, R-103, R-109, S-104, S-105, S-106, S-107, M-110, N-108

- Also fits Cup #1 and Cup #8

1000/Bag



## SS #2

Snap Seal #2 fits Index Cover R-105

- Also fits Cup #2

1000/Bag



## Tophat

Tophat tamper plug fits American Meter index covers, cups, and meter top castings.

- Also fits Itron ERT Covers

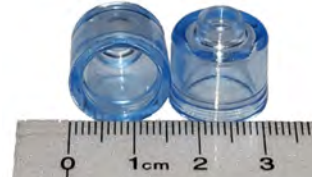
1000/Bag



## TS Plug

TS Plug fits Rockwell Meter index covers, cups, and meter top castings.

1000/Bag

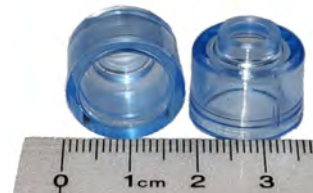


## Cup #1

Cup #1 fits Rockwell and Sprague residential hand hole plates

Uses Snap Seal #1 and 10-24 pan head screw

500/Bag

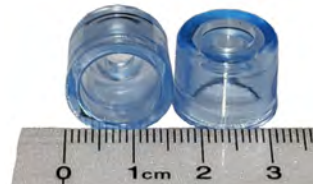


## Cup #2

Cup #2 fits American residential hand hole plate

Uses Snap Seal #2 and 1/4-20 pan head screw

500/Bag

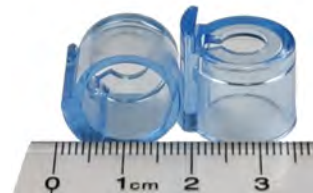


## Cup #8

Cup #8 fits American commercial index mounting screw

Uses Snap Seal #1 and 8/32 x 5/8 pan head screw

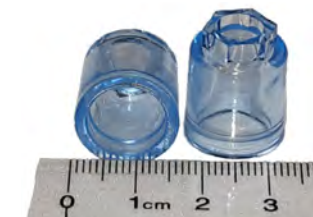
500/Bag



## Cup Tophat

Has Hand Hole corner tab, fits American residential Hand Hole. Uses Tophat tamper plug and 1/4-20 pan head screw

500/Bag



## Cup Hex

Cup Hex fits American residential hex hand hole plate

Uses Snap Seal #1 and 1/4-20 fillister head screw

500/Bag

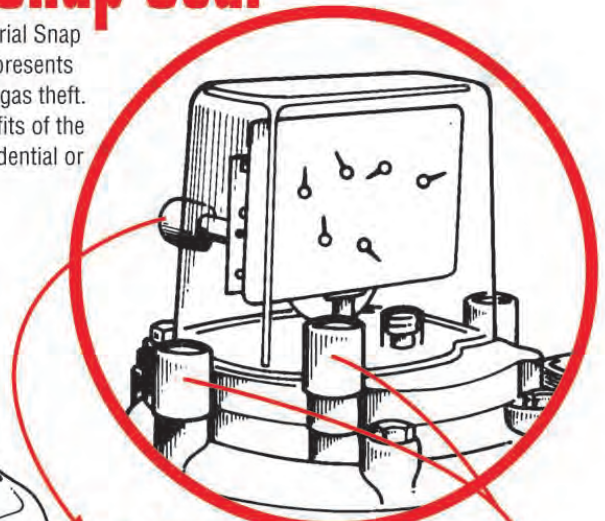
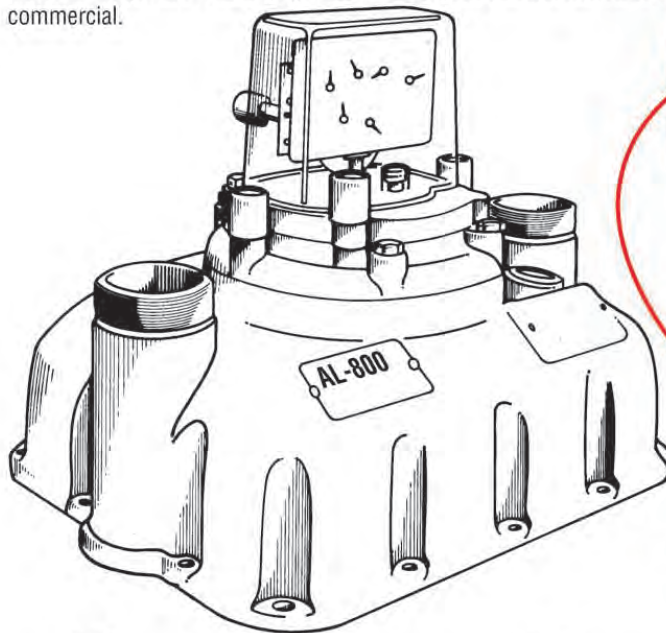


CAROLINA MOLDINGS, INC.

# THE FIRST TAMPER PLUG SYSTEM EVER

## You Can't Steal From Snap Seal®

Carolina Moldings is proud to introduce the Commercial/Industrial Snap Seal® Sealing System. The Commercial/Industrial gas meter represents your largest volume customer and therefore your largest risk of gas theft. With the creation of this larger cup you can now enjoy the benefits of the patented Snap Seal® Sealing System for all of your meters, residential or commercial.



### A-103-1 Kit #1

- 1 A-103 Index Cover w/Silicone Gasket
- 4 Snap Seals® #1
- 2 Cup #8
- Screws Included for Cups
- Protects Index Mounting Screws

### A-103-1 Kit #2

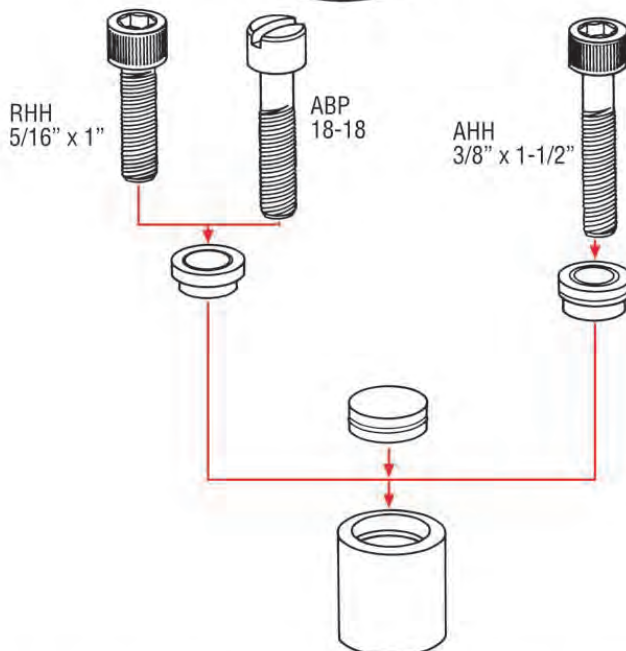
- 1 A-103 Index Cover w/Silicone Gasket
- 4 Snap Seals® #1
- 2 Cup #8
- 2 SS #3
- 1 Cup ABP (American Base Plate Cup)
- Screws Included for Cups
- Protects Index Mounting Screws
- Protects Base Plates for (AL-800, 1400, 2300, 5000)
- \* A-103-1 Kit #3 includes AHH cup kit which protects Hand-Hole for (AL-800, 1400)

### R-105 Kit (Not Shown)

- 1 R-105 Index Cover
- 2 Snap Seals® #2
- 1 SS #3
- 1 Cup RHH (Rockwell Hand-Hole Cup)
- Screws Included for Cup
- Protects Hand-Hole for (R-415, 750, 1000, 1600, 3000)
- R-415 uses R-103 index cover

ALL PARTS ALSO SOLD SEPARATELY

For more information refer to: [www.carolinamoldings.com](http://www.carolinamoldings.com)  
Call Carolina Moldings at 1-800-523-7475 or fax us at 704-527-0684 for details and pricing



**Carolina  
Moldings  
Incorporated**



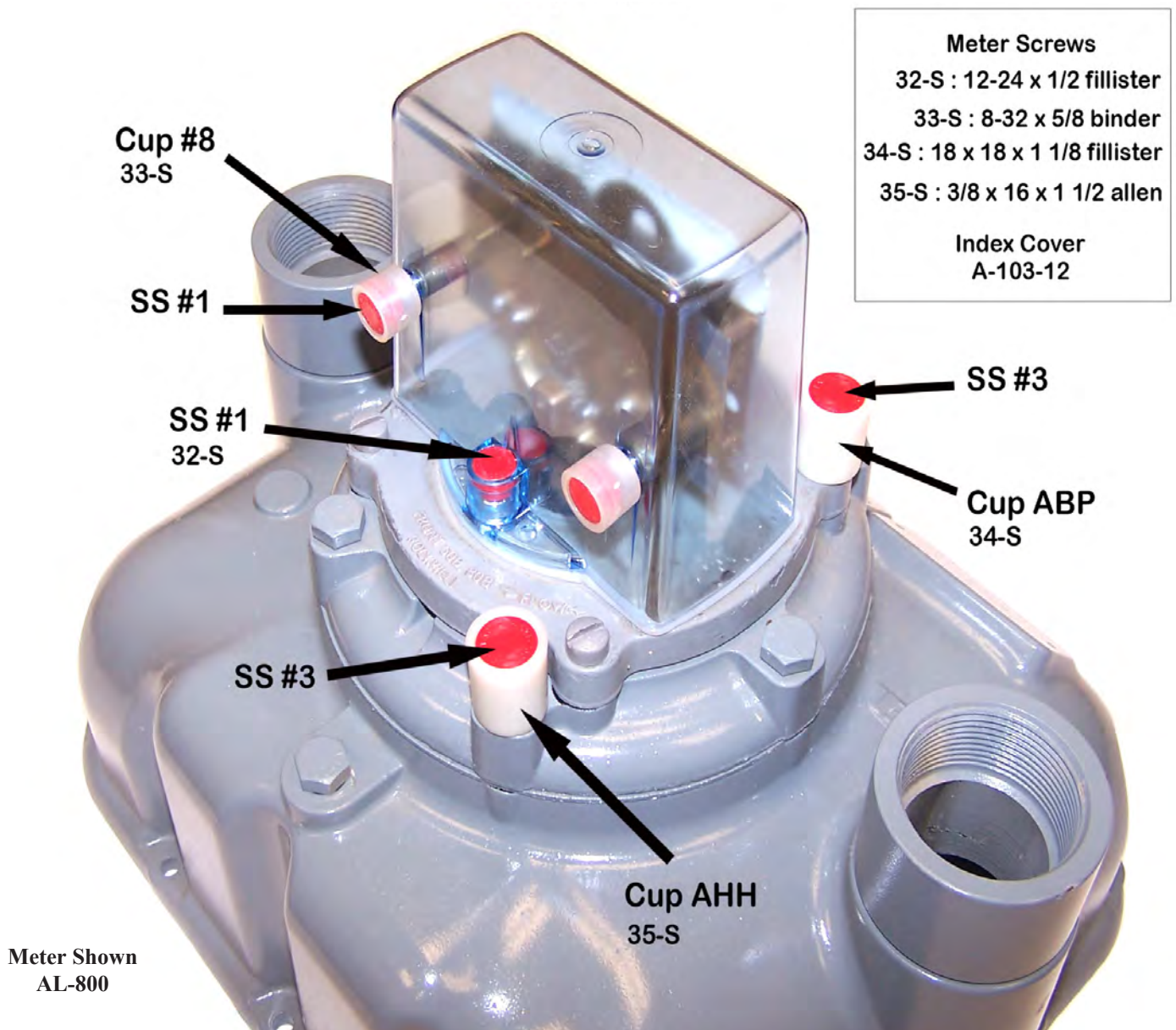


CAROLINA MOLDINGS, INC.

## COMMERCIAL METER TAMPER SYSTEM

Our system of tamper plugs, cups, and screws, show evidence of tampering with the meter for the purpose of gas theft.

Every possible point of entry into the meter is protected by preventing access to the screws at each level of potential theft. The Hand Hole, Baseplate, and Index Cover are all protected from theft on your highest volume meters.



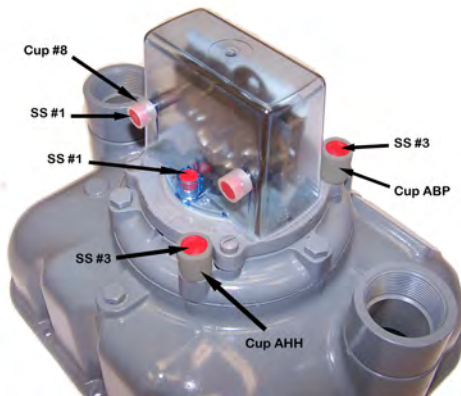




CAROLINA MOLDINGS, INC.

# COMMERCIAL METER TAMPER SYSTEMS

\* All Listed Screws Are Available \*



## A-103 American

Protects Every entry point on American 35B – 500B and AL800 – AL5000 Meters

54/Case



## CUP #3 - AHH, ABP, RHH

As Needed

AHH Cup - Large hole bushing Protects American Hand Hole on 35B – 500B and AL800 – AL5000 Meters. Uses 3/8 X 1 1/2" Allen Head

RHH Cup - Small hole bushing Protects Hand Hole on Rockwell R415, 750 – 3000. Uses 5/16 X 1" Allen Bolt

ABP Cup - Small hole bushing Protects American Baseplate on 35B – 500B and AL800 – AL5000 Meters. Uses custom 18 X 18 fillister head screw.

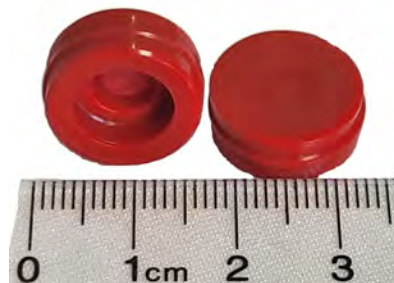


## R-105 Rockwell

Protects index cover and Hand Hole on Rockwell R415, 750-3000 Meters

\* Will accept 2 Snap Seal #2 tamper plugs, 1 RHH CUP and SS#3 (not included)

As Needed



## SS #3

As Needed

Fits in AHH, ABP, and RHH CUP #3s

Protects Hand Hole on Rockwell R415, 750 – 3000  
Protects American Baseplate and Hand Hole on 35B – 500B and AL800 – AL5000 Meters



CAROLINA MOLDINGS, INC.

## PAINT COVERS



**PC A1**

Fits A-101 and A-101-OS Index Covers

As Needed



**PC R3**

Fits R-103, R-103-OS, and R-104 Index Covers

As Needed



**PC A-40G**

Fits A-40G Index Cover

As Needed



**PC R-40G**

Fits R-40G Index Cover

As Needed



**PC A3**

Fits A-103 and A-103-OS Index Covers

As Needed



**PC A3-100G**

Fits A-103 Index Cover and Commercial American 100G ERT

As Needed



**PC A-100G**

Fits A-100G Index Cover

As Needed



**PC R-100G**

Fits R-100G Index Cover

As Needed



# METER SCREWS

## ADDITIONAL SCREWS

### **37-S**

1/4-20 x 3/4 Rockwell Combo Case Screw



## ACTARIS/SPRAGUE METER SCREWS

### **50-S**

10-24 x 1 x 5/8 flat head for S-104

### **51-S**

10-24 x 1/2 fillister head for S-105

### **52-S**

#6 Drive stud for badge plate on S-104 & S-105

### **54-S**

10-24 x 1/4 pan head for residential Sprague Index

## AMERICAN METER SCREWS

### **30-S**

1/4-20 x 5/8 fillister head index cover screw; Fits A-101 & A-101-OS

### **31-S**

1/4-20 x 3/4 pan head; Fits Cup #2

### **32-S**

12-24 x 1/2 fillister head index cover screw; Fits A-103 & A-103-OS

### **33-S**

8-32 x 5/8 binder head index mounting screw; Fits back of A-103 & A-103-OS, & Cup #8

### **34-S**

18 x 18 x 1 1/8 fillister head; Fits Cup ABP

### **35-S**

3/8 x 1 1/2 allen head; Fits Cup AHH

### **36-S**

8-32 x 3/16 round head AL-175-250 Index

## SENSUS/ROCKWELL METER SCREWS

### **51-S**

10-24 x 1/2 fillister for R-103 & R-103-OS

### **41-S**

10-24 x 3/4 fillister for R-104 & Rockwell ERT index cover

### **42-S**

5/16 x 18 x 1 allen head for RHH Cup & R105 index cover

### **43-S**

10-24 X 5/8 pan head for #1 Cup

### **44-S**

5/16 x 18 x 1 fillister for R-105

### **45-S**

6-32 x 5/8 fillister for Rockwell index

### **53-S**

10-24 x 5/8 longer thread) fillister for R-103 & Rockwell hand hole cover





CAROLINA MOLDINGS, INC.

## MISCELLANEOUS PARTS



### Regulator Vent

90° 3/4 inch full flow internal relief regulator vent

400/Case

## METER GASKETS

### 30-C

Cork gasket for A-101 & A-101-OS index covers

As Needed

### 31-C

Cork gasket for A-103& A-103-OS index covers

As Needed

### 32-C

Cork gasket for ITRON ERT Residential American  
• One side adhesive

As Needed

### 40-C

Cork gasket for R-103, R-103-OS, & R-104 index covers

As Needed

### 41-C

Cork gasket for ITRON ERT Residential Rockwell  
• One side adhesive

As Needed

### 50-C

Cork gasket for S-105 index covers

As Needed

### 51-C

Cork gasket for ITRON ERT Residential Sprague  
• One side adhesive

As Needed

### Custom Molding

We can produce any part you might need

Call



### A-103

Also Fits American Turbin Meters

54/Case



### M-110-OS

Fits Mercury Instruments

169/Case

### M-110-OS-1

Consists of M-110-OS with SureSeal preapplied  
silicone gasket