

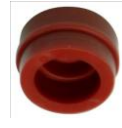
Snap Seal Tamper Systems

SS #1



The Carolina Moldings' parts for American, Rockwell, and Sprague in these two columns use the SS #1

SS #2



Parts in this column use the SS #2

SS #3



Parts in this column use the SS #3



**American 175 – 425 Meters
A-101-12**



**Rockwell 150-415 Meters
R-103-12**



**American Residential
Hand Hole Cup #2**



ABP Cup



**Sprague 175-400 Meters
S-105-12**



**American 35B-500B &
AL800 – AL5000 Meters
A-103-12**



**Rockwell 750 – 5000 Meters
R-105-2**



AHH Cup



**Sprague 1A - 240 Meter
S-104-12**



**Rockwell Residential
Hand Hole Cup #1**



RHH Cup



**Back of A-103 (index Screw)
Cup #8**



**American Residential
Hex Shape Hand Hole Cup**

Tophat Tamper Seal Systems



**American 40G ERT
A-40G-12**



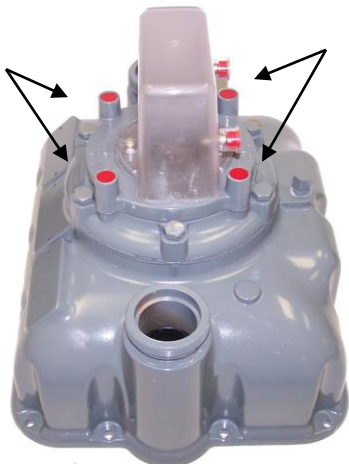
**Rockwell 40G ERT
R-40G-12**



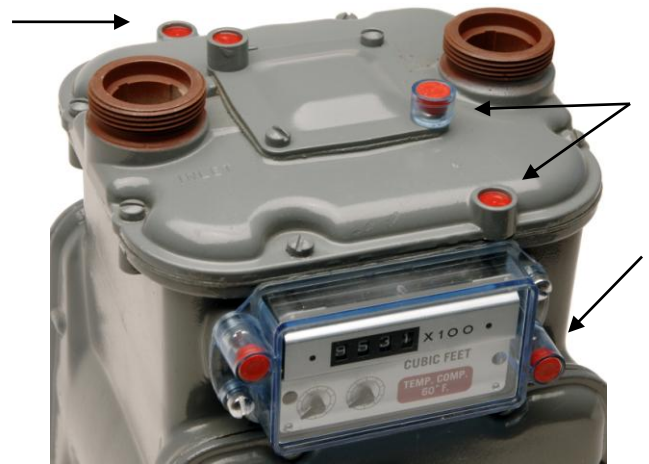
Tamper Seal for ALL American Meter Products



**Cup Tophat for American
Residential Meter Hand Hole Covers**



**All Tamper Seals for American Commercial
American 35B-500B & AL800 – AL5000 Meters**



**All Tamper Seals for American Residential
American 175 – 425 Meters**